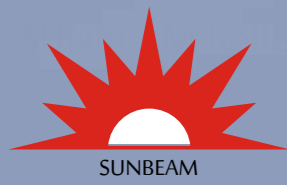


Roller Shutter Motors



Website

Version 2018.05



SUNBEAM

High-security, Smart, Rugged, Wind Resistant Gating Systems

SUNBEAM is a brand name of Golden Mountain Machinery Co., Ltd., which is one of the early pioneers and modern-day innovators of Gating Systems for home and office facilities. Established in 1973, SUNBEAM's award-winning products include **Roller Shutter Motors, Roller Shutters, Smart Strong-Wind Resistant Roller Shutters, Speedy Roller Shutters, Fence Sliding Gate Operators, and Smart Collapsible Gates**, all of which are developed and produced in our **ISO9001 certified, 8,983 square-meter office and factory facilities**, operating out of **Central Taiwan**.

SUNBEAM's staying-power is firmly entrenched in a culture of attention-to-detail and reinvention, introducing new services, materials and technology to help focus on raising the standards on **smart, rugged, long-lasting gating solutions**. SUNBEAM technologies has secured countless patents across Taiwan, Europe, America, Malaysia and Japan, and has garnered generous subsidies from the SBIR (Small Business Innovation Research) for the advancement of new technologies for the Gating Industry.

Local/International Patents



Each of our product lines are the culmination of many years of professional experience and technology evolution that are backed up by a long list of patent certificates and decorations, both locally and internationally - it is a testament to our dedication and commitment to bring new directions and ideas to the Gating Industry.



Golden Mountain Established by President HUNG, CHIN-SHAN

1973

Moved to first factory and office complex

1991

1987

Far Eastern Asia Invention Fair Award Winner

ISO 9001

2001

1992

Upgraded factory to accommodate expanding business

Launched new second factory

2007

2005

Launched Smart Fence Sliding Gate Operators (MOEA patent and subsidies)

Strong-Wind Resistant Roller Shutter technology 20-year patent (MOEA subsidized)

2014

Launched Speedy Roller Shutters

Launched Speedy Roller Shutter Factory

2016

Features

SUNBEAM

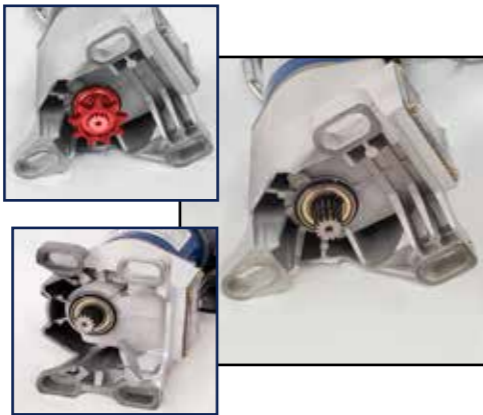
Solutions with Purpose

SUNBEAM Roller Shutter Motors are built to complement your outstanding Roller Shutter products with Versatile Configurations, Convenient Control and Safe Operations. They are infused with 50+ years of experience, built to withstand the rigors of constant motion and friction over time, leaving you with a reliable product that just keeps on going.

Versatility



Chain Type Models / Gear Type Models



Variety of adapters to fit most Roller Shutter systems.



Horse Power from 1/6 HP to 1 HP

Convenience



Off-site Cellphone Control and Office Control Center (optional)



Remote Control Access (optional)

Safety



Emergency brake mechanism in case of chain failure (optional)



Our Roller Shutters use a Magnetic Braking System, which does not require a brake coil or commutator - this means no friction and no brake burnout.



Motor temperature Sensor - Overheat Auto-Stop

Multi-functional Security Host

Door-bottom **Touch-Stop** pauses a closing door on light contact / **Smoke Alarm** (can open or close door on alarm) / **Infrared Light Trip-Sensor** pauses door when object crosses line-of-light / **Forced-Entry alarm** / When Reed switch or Infrared fails, you can press the remote control "open" button 4 times (or hold button for 5 secs) to open or the "close" button 4 times (or hold button for 5 secs) to close.



Product

SUNBEAM Roller Shutter Motors are divided into 3-legged and 4-legged configurations, differentiated by the number of holes at the bottom of the motors. Each type has different mechanisms for the roller shutter transmission system, which can be Slot-type, Chain-type, or Gear-type (4-legged motors). Finally, each motor has different horse-power specifications, which caters to the different Roller Shutter loads.

RAB - 3-legged Slot type



**RBB - 3-legged
Self-install Chain type**



RCB - 4-legged Gear type



**RDB - 4-legged,
Self-install Chain type**



RFB - 4-legged Slot type

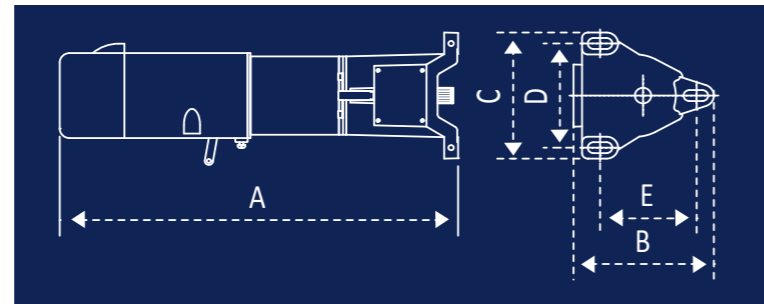


RAB

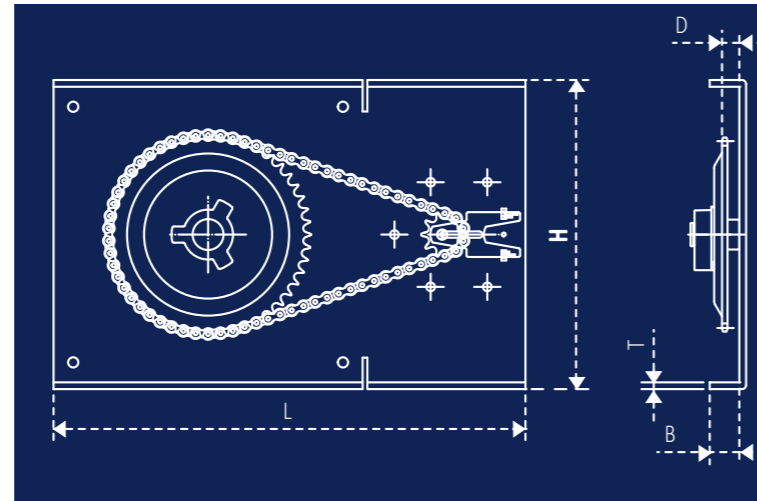
3-legged, Slot type



Front view



Schematic Diagram (See Appendix I for ABCDE dimensions)



Bracket Plate Diagram (See Appendix I for HLBDT dimensions)



Bottom

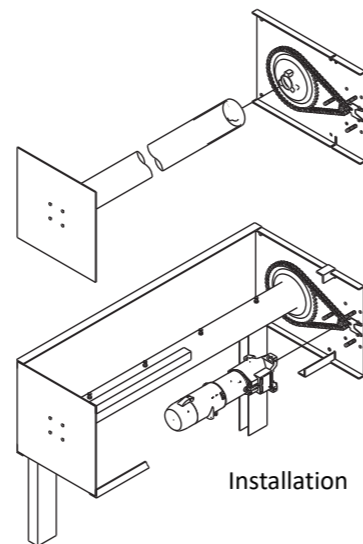


Bracket Plate

The RAB is a 3-legged model with a Slot-type pulley mechanism. This configuration comes with a Bracket Plate including sprockets and an attached chain. It is a complete system that is very straight forward to install.

Model	Model Number	Horse Power	R.P.M.	Load (kg)
RAB	30	1/6HP	39	300
				240
	40	1/4HP	39	400
				320

See Appendix I for full specifications



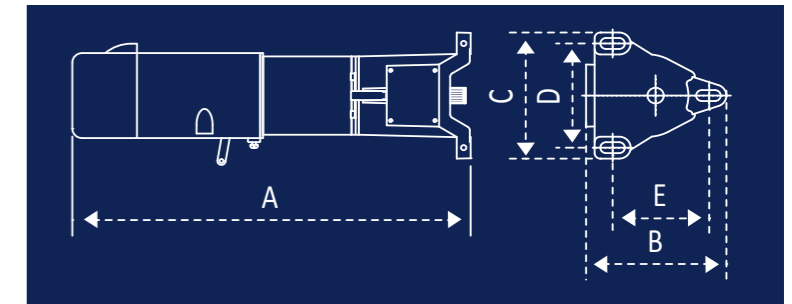
Installation

RBB

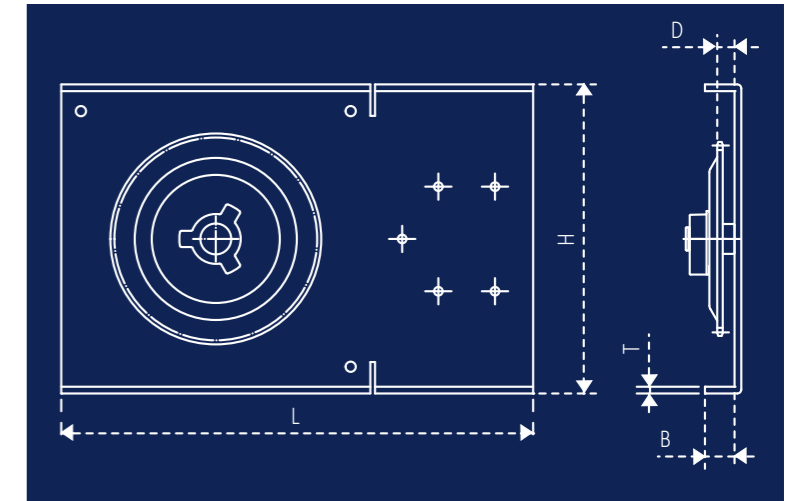
3-legged, Self-install Chain type



Front view



Schematic Diagram (See Appendix I for ABCDE dimensions)



Bracket Plate Diagram (See Appendix I for HLBDT dimensions)



Bottom

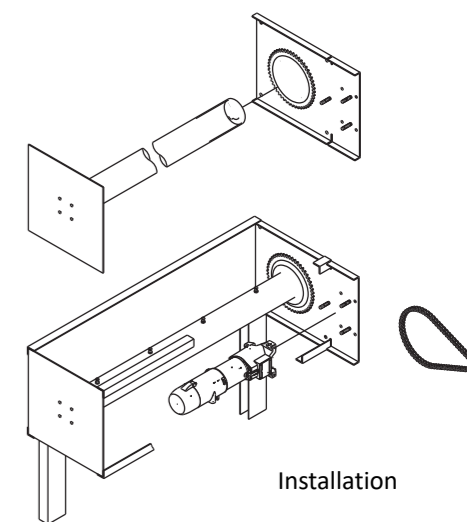


Bracket Plate and Chain

The RBB is a 3-legged model called a Self-install Chain-type configuration, simply because the chain can be installed yourself. A smaller sprocket is attached at the bottom of the motor (instead of the bracket).

Model	Model Number	Horse Power	R.P.M.	Load (kg)
RBB	30	1/6HP	39	300
				240
	40	1/4HP	39	400
				320

See Appendix I for full specifications



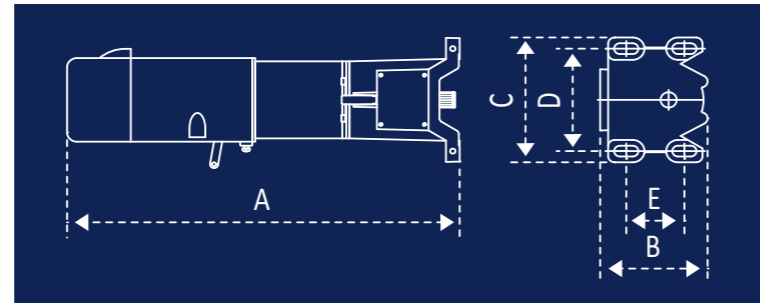
Installation

RCB

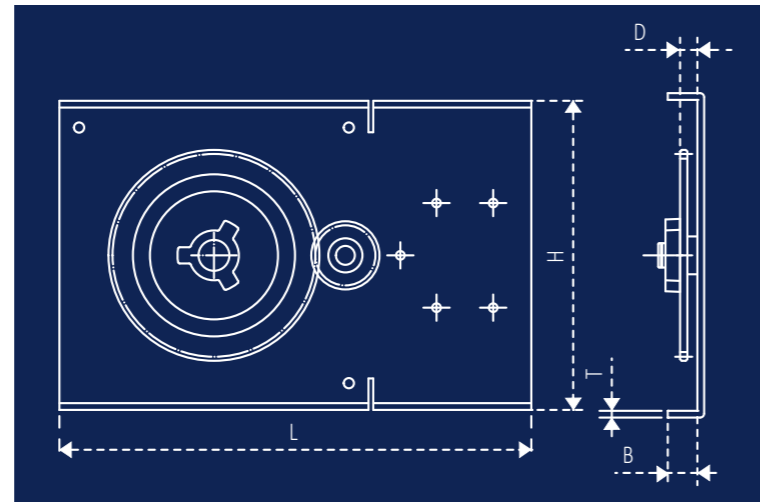
4-legged, Gear type



Front view



Schematic Diagram (See Appendix I for ABCDE dimensions)



Bracket Plate Diagram (See Appendix I for HLBTD dimensions)



Bottom

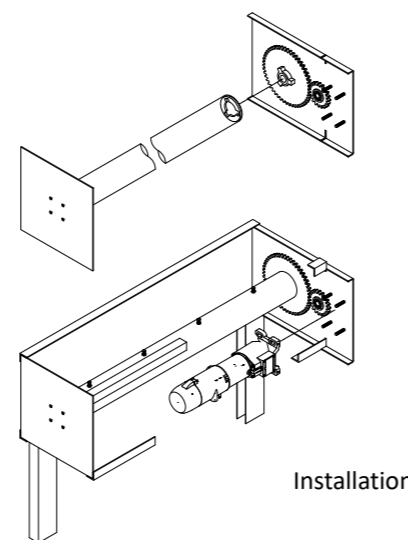


Bracket Plate

The RCB is a 4-legged model with a Gear-type mechanism that does not use a chain. A special attachment sprocket is fitted at the bottom of the motor and turns the sprockets on the bracket plate.

Model	Model Number	Horse Power	R.P.M.	Load (kg)
RCB	30	1/6HP	39	300
				240
	40	1/4HP	39	400
				320

See Appendix I for full specifications



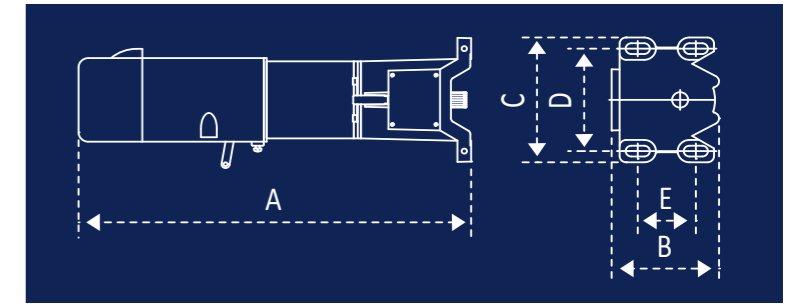
Installation

RDB

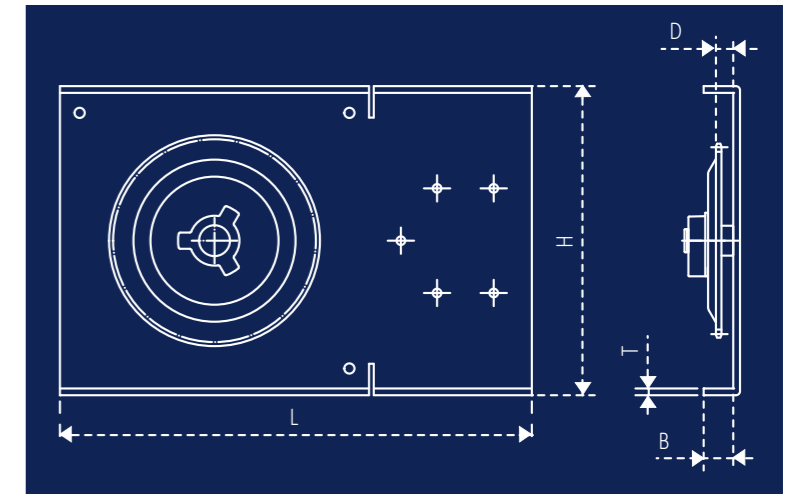
4-legged, Self-install Chain type



Front view



Schematic Diagram (See Appendix I for ABCDE dimensions)



Bracket Plate Diagram (See Appendix I for HLBTD dimensions)



Bottom

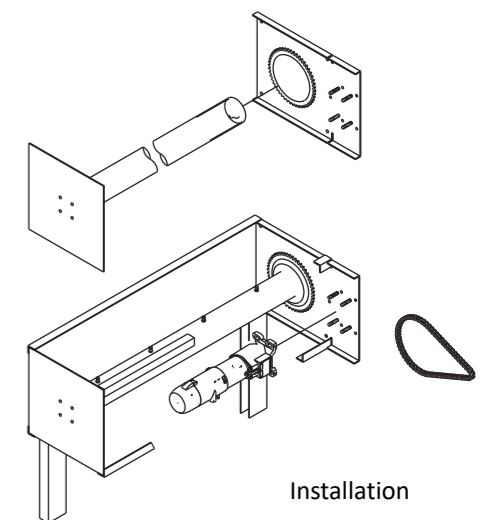


Bracket Plate and Chain

The RDB is a 4-legged model called a Self-install Chain-type configuration, simply because the chain can be installed yourself. A smaller sprocket is attached at the bottom of the motor (instead of the bracket).

Model	Model Number	Horse Power	R.P.M.	Load (kg)
RDB	30	1/6HP	39	300
				240
	40	1/4HP	39	400
				320
60	1/2HP	21	600	
			500	
100	1HP	11	1000	
			800	

See Appendix I for full specifications



Installation

RDB

4-legged, Self-install Chain Type (600 kg)

RDB Model 60



RDB

4-legged, Self-install Chain type (1000 kg)

RDB Model 100

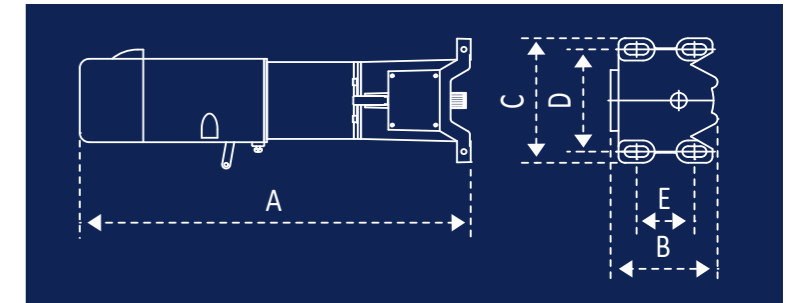


RFB

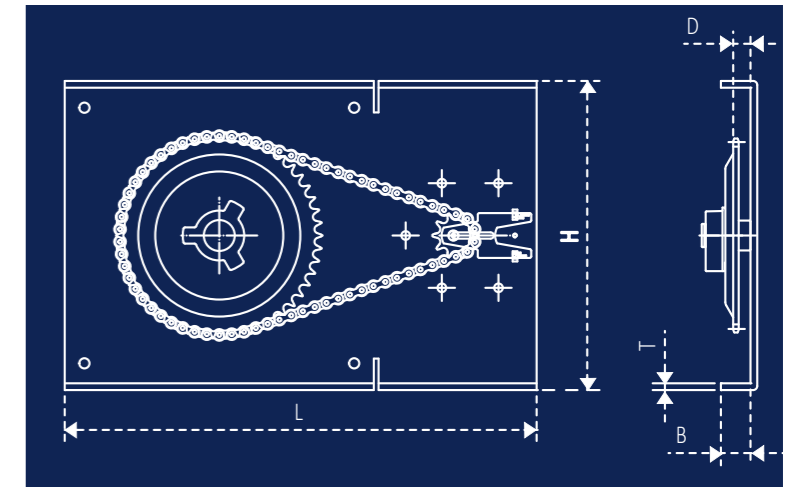
4-legged, Slot type



Front view



Schematic Diagram (See Appendix I for ABCDE dimensions)



Bracket Plate Diagram (See Appendix I for HLBTD dimensions)



Bottom

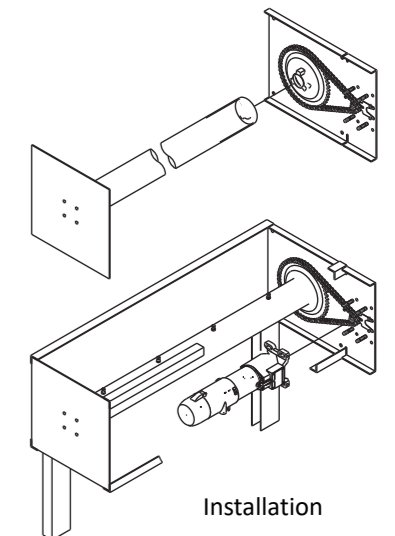


Bracket Plate

The RFB is a 4-legged model with a Slot-type pulley mechanism. This configuration comes with a Bracket Plate including sprockets and attached Chain. It is a complete system that is very straight forward to install.

Model	Model Number	Horse Power	R.P.M.	Load (kg)
RFB	30	1/6HP	39	300 240
	40	1/4HP	39	400 320
	60	1/2HP	21	600 500

See Appendix I for full specifications



Installation

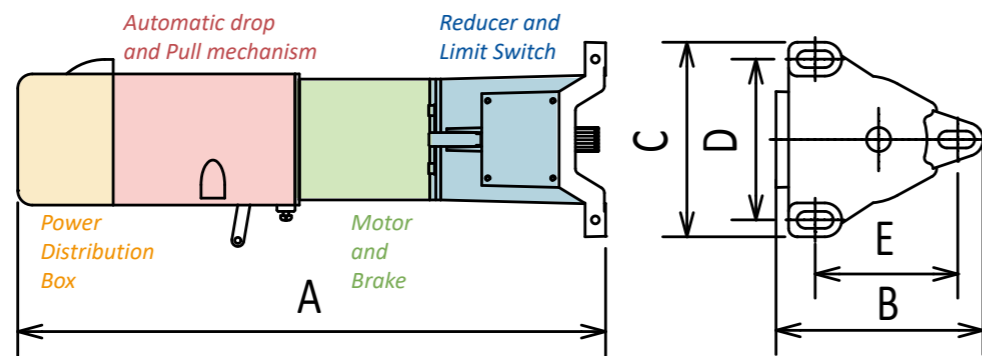
RFB

4-legged, Slot Type (600 kg)

RFB Model 60



Appendix I Full Specifications

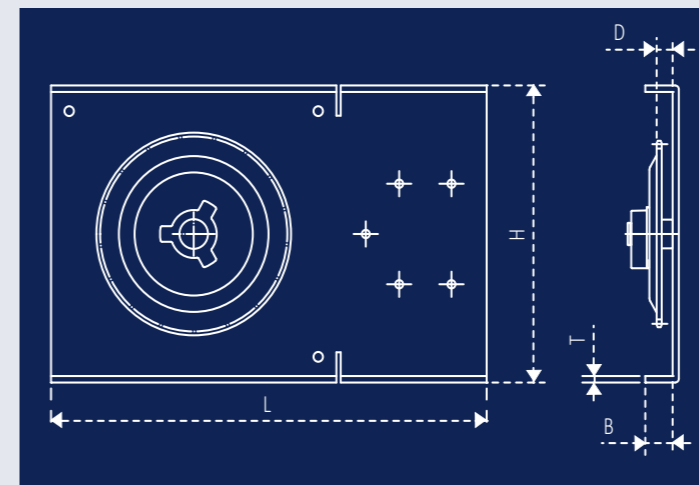


3-legged Motor Specifications

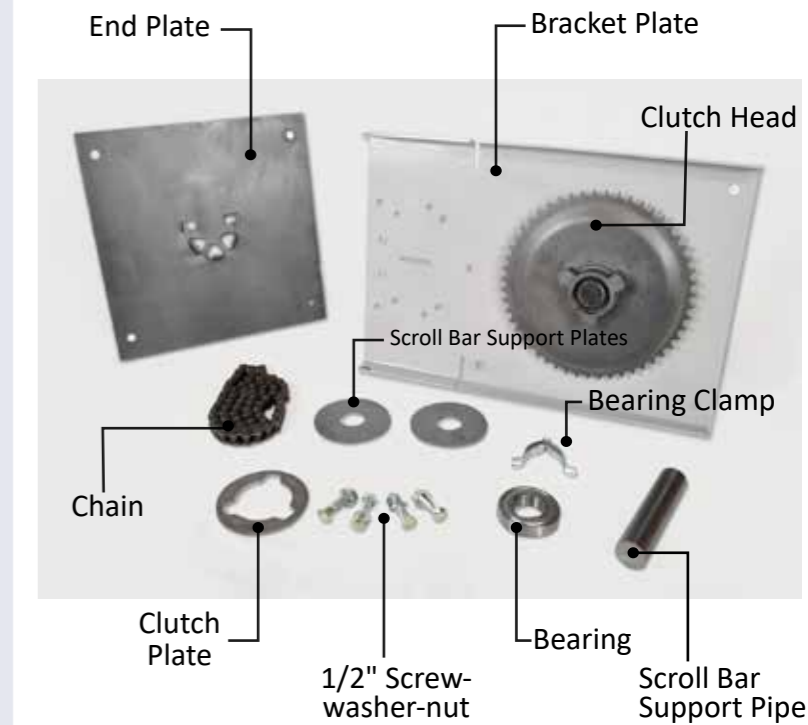
Model	Transmission Type	Model Number	Voltage	Current	Horse Power	R.P.M.	Pipe	Load (kg)	Bracket Transmission	Dimensions (mm)					Net Weight (kg)	Gross Weight (kg)		
										A	B	C	D	E				
RAB	Plug sprocket attached to gear plate 530#	30	1Ø110V	4.3A	1/6HP	39	4"	300	9-tooth /51-tooth	487	172	161	133	118	8.45	9.05		
			1Ø220V	1.9A			5"	240										
		40	1Ø110V	5.7A	1/4HP	39	4"	400	9-tooth /51-tooth	509	172	161	133	118	9.40	10.00		
			1Ø220V	2.4A			5"	320										
		RBB	Self install chain sprocket 530#	30	1Ø110V	4.3A	1/6HP	39	4"	300	9-tooth /51-tooth	487	172	161	133	118	8.55	9.15
					1Ø220V	1.9A			5"	240								
40	1Ø110V			5.7A	1/4HP	39	4"	400	9-tooth /51-tooth	509	172	161	133	118	9.60	10.20		
	1Ø220V			2.4A			5"	320										
					3Ø220V	1.3A												

Voltages can be customized for your region

DIMENSIONS



Bracket Plate Diagram (See Appendix I for HLBTD dimensions)

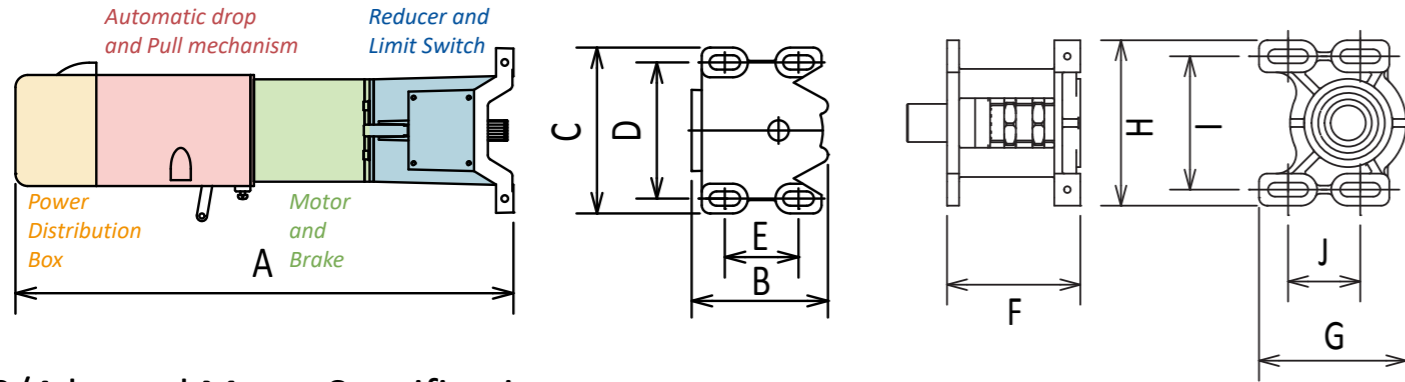


Bracket Plate Specifications for 3/4-legged Motors (Self Install Chain type)

Bracket	Model ID	Motor	Bracket Plate	Dimensions					Transmission specifications				Net Weight (kg)	Gross Weight (kg)	Standard Accessories
				H	L	B	D	T	Chain	Active Gear	Iron Pipe	Axis			
JD5111	RBB-030	1.1 ft.	333	540									17.8	18.4	Bearing x1
JD5112	RBB-040	1.2 ft.	363	570									19.4	20.1	Bearing-Clamp x1
JD5113	RDB-030	1.3 ft.	393	600	27	17.5	4	530#	51	4"-5"	Ø35	6207	21.1	21.8	Scroll Bar Support Pipe x1
JD5114	RDB-040	1.4 ft.	423	630									25.1	25.8	Clutch Plate x1
JD5114		1.4 ft.	423	630	27/33	17.5	4	530#/640#							End Plate x1
JD5115	RDB-060	1.5 ft.	453	660	33	21	4.5	640#	48	5"-6"	Ø35	6207			1/2" Screw-Nut-Washer set x4
JD5116		1.65 ft.	500	707	33	21	4.5	640#							Chain x1
JD5115	RDB-100	1.5 ft.	453	660		21	4.5	640#	50	6"-18"					
JD5116		1.65 ft.	500	707	33	21	4.5								
JD5118		1.8 ft.	545	752			5.0								
JD5120		2.0 ft.	606	813			5.0								

Bracket Plate size can be customized
1.0 ft. = 303 mm

Appendix I (continued)



3/4-legged Motor Specifications

Model	Transmission Type	Model Number	Voltage	Current	Horse Power	R.P.M.	Pipe	Load (kg)	Bracket Transmission	Dimensions (mm)					Net Weight (kg)	Gross Weight (kg)		
										A	B	C	D	E				
RCB	Gear M5	30	1Ø110V	4.3A	1/6HP	39	4"	300	9-tooth /50-tooth	487	133	161	133	72	8.70	9.30		
			1Ø220V	1.9A			5"	240										
		40	1Ø110V	5.7A	1/4HP	39	4"	400	9-tooth /50-tooth	509	133	161	133	72	9.85	10.45		
			1Ø220V	2.4A			5"	320										
		RDB	Self installed chain sprocket	30	1Ø110V	4.3A	1/6HP	39	4"	300	9-tooth /51-tooth	487	133	161	133	72	8.60	9.20
					1Ø220V	1.9A			5"	240								
40	1Ø110V			5.7A	1/4HP	39	4"	400	9-tooth /51-tooth	509	133	161	133	72	9.65	10.25		
	1Ø220V			2.4A			5"	320										
60	1Ø110V			na	na	1/2HP	21	5"	600	9-tooth /48-tooth	599	137	165	133	72	17.50	18.80	
	1Ø220V			3.6A	na			6"	500									
100	Self installed chain sprocket 640# (double sprocket)	1Ø110V	1Ø220V	1HP	11	8"	1000	9-tooth /50-tooth	610	137	165	133	72	17.40	18.70			
						3Ø220V	na									na	10"	800
RFB	Plug sprocket attached to gear plate	30	1Ø110V	4.3A	1/6HP	39	4"	300	9-tooth /51-tooth	487	133	161	133	72	8.45	9.05		
			1Ø220V	1.9A			5"	240										
		40	1Ø110V	5.7A	1/4HP	39	4"	400	9-tooth /51-tooth	509	133	161	133	72	9.60	10.20		
			1Ø220V	2.4A			5"	320										
		60	640#	1Ø110V	na	na	1/2HP	21	5"	600	9-tooth /48-tooth	599	137	165	133	72	17.40	18.70
				1Ø220V	3.6A	na			6"	500								

na- not applicable

Voltages can be customized for your region

Bracket Plate Specifications for 4-legged Motors (Gear type)

Bracket	Motor	Bracket Plate	Bracket Plate Dimensions					Transmission Specifications					Net Weight (kg)	Gross Weight (kg)	Standard Accessories	
			H	L	B	D	T	Gear	Active Gear	Passive Gear	Iron Pipe	Axis				Bearings
JC5111	RCB-030 RCB-040	1.1 ft.	333	500	19	15	4	M5	9	50	4"	Ø35	6207	16.8	17.3	Bearing x1 Bearing Clamp x1
JC5112		1.2 ft.	363	520	19	15	4	M5	9	50	4"	Ø35	6207	19.4	20.1	Scroll Bar Support Pipe x1
JC5113		1.3 ft.	393	535	19	15	4	M5	9	50	4"	Ø35	6207	20.8	21.4	Clutch Plate x1 End Plate x1
JC5114		1.4 ft.	423	555	19	15	4	M5	9	50	4"	Ø35	6207			1/2" Screw-Nut-Washer set x4

Bracket Plate size can be customized 1.0 ft. = 303 mm

Bracket Plate Specifications for 3/4-legged Motors (Slot Type)

Bracket	Motor	Lattice Gauge	Shelf Board	Dimensions					Transmission Specifications					Net Weight (kg)	Gross Weight (kg)	Standard Accessories
				H	L	B	D	T	Chain	Active Gear	Passive Gear	Iron Pipe	Axis			
JF5111	RAB-030 RAB-040 RFB-030 RFB-040	530#	1.1 ft.	333	540	27	17.5	4	9	51	4"-5"	Ø35	6207	17.8	18.4	Bearing x1 Bearing Clamp x1
JF5112				363	570	27	17.5	4	9	51	4"-5"	Ø35	6207	19.4	20.1	Scroll Bar Support Pipe x1
JF5113				393	600	27	17.5	4	9	51	4"-5"	Ø35	6207	21.1	21.8	Clutch Plate x1 End Plate x1
JF5114				423	630	27	17.5	4	9	51	4"-5"	Ø35	6207	25.1	25.8	1/2" Screw-Nut-Washer set x4
JF5114	RFB-060	640#	1.4 ft.	423	630	27/33	17.5	4	9	48	5"-6"	Ø35	6207			Chain x1
JF5115				453	660	33	21	4.5	9	48	5"-6"	Ø35	6207			
JF5116				500	707	33	21	4.5	9	48	5"-6"	Ø35	6207			

Bracket Plate size can be customized 1.0 ft. = 303 mm

Appendix II - Chain and Gear Specifications

RAB, RBB, RDB, RFB Comparison Table

Chain Type : Roller Shutter Motor / Bracket Plate / Iron Pipe / Slat / Load / Height

Shutter motor model number	Bracket plate height (m)	Number of teeth	4" iron pipe		5" iron pipe		6" iron pipe		8" iron pipe			
			136/75(mm)	174/100(mm)	136/75(mm)	174/100(mm)	174/100(mm)	174/100(mm)				
			Load kg	Height m	Load kg	Height m	Load kg	Height m	Load kg	Height m		
030	1.1	51	300	2.39	1.99	2.09						
	1.2			3.35	2.46	240	2.89	240	2.57	200	1.76	150
	1.3			4.23	3.65	240	3.77	240	3.14	200	2.64	2.13
	1.4			4.73	3.92	240	4.73	200	3.41	150	3.21	
040	1.1	51	400	2.39	1.99	2.09						
	1.2			3.35	2.46	320	2.89	320	2.57	265	1.76	200
	1.3			4.23	3.65	320	3.77	320	3.14	265	2.64	2.13
	1.4			4.73	3.92	320	4.73	265	3.41	200	3.21	
060	1.4	48	600	4.73	3.92	4.73						
	1.5			6.00	5.00	480	4.70	400	4.49	300	4.29	
	1.65			6.27	6.27	480	6.37	400	5.76	300	5.66	
100	1.5	50	1000									
	1.65			5.00	800	800	6.37	666	6.07	500	5.66	
	1.8			6.27	800	800	6.37	666	6.32	500	6.12	
	2.0			6.32	800	800	6.32	666	6.32	500	6.12	

"Height" refers to the Drive Through Height
The figures in this table are for reference only.

RCB Comparison Table

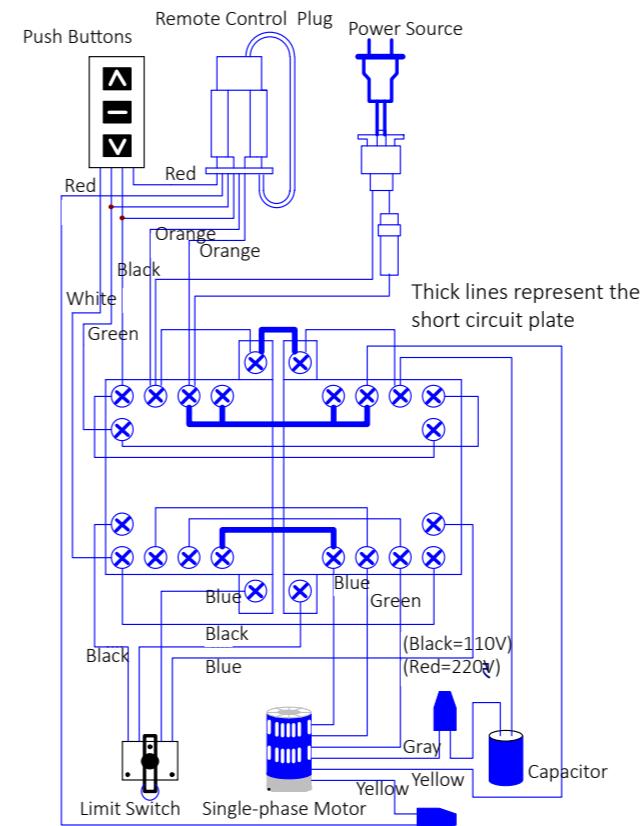
Gear Type : Roller Shutter Motor / Bracket Plate / Iron Pipe / Slat / Load / Height

Shutter motor model number	Bracket Plate Height (m)	Number of teeth	4" iron pipe		5" iron pipe	
			136/75(mm)	174/100(mm)	136/75(mm)	174/100(mm)
			Load kg	Height m	Load kg	Height m
030	1.1	50	300	2.39	1.99	2.09
	1.2			3.35	2.46	2.57
	1.3			4.23	3.65	3.14
	1.4			4.73	3.92	3.92
040	1.1	50	400	2.39	1.99	2.09
	1.2			3.35	2.46	2.57
	1.3			4.23	3.65	3.14
	1.4			4.73	3.92	3.92

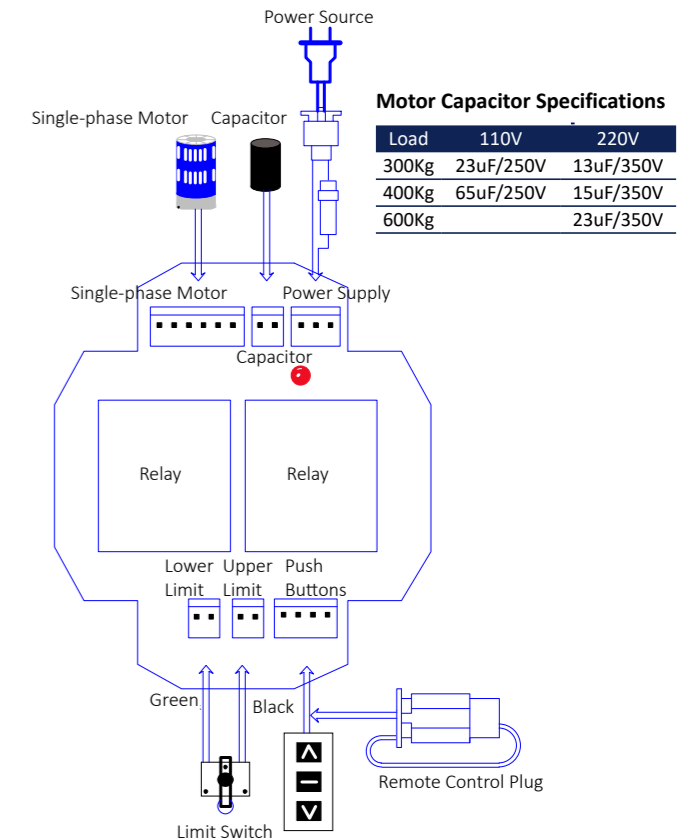
"Height" refers to the Drive Through Height
The figures in this table are for reference only.

Appendix III - Circuitry Diagrams

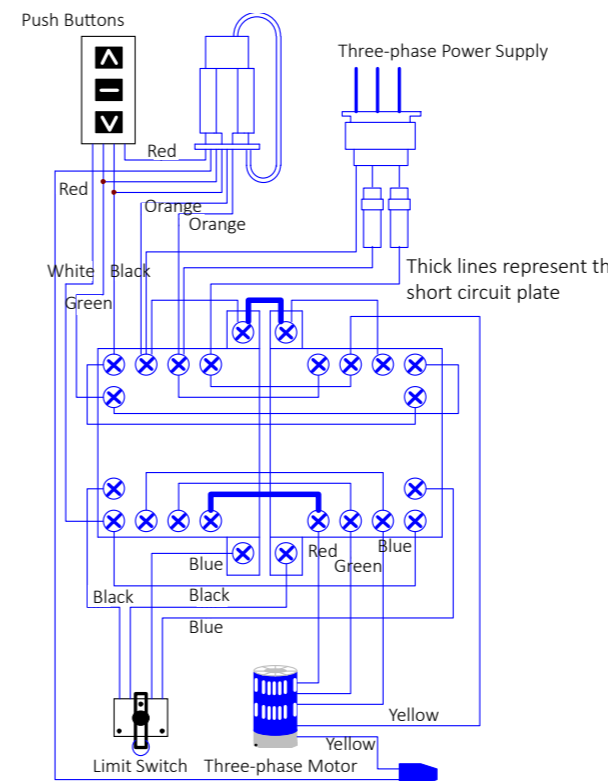
Magnetic Contactor Circuitry Diagram for Single-phase Roller Shutter Motor



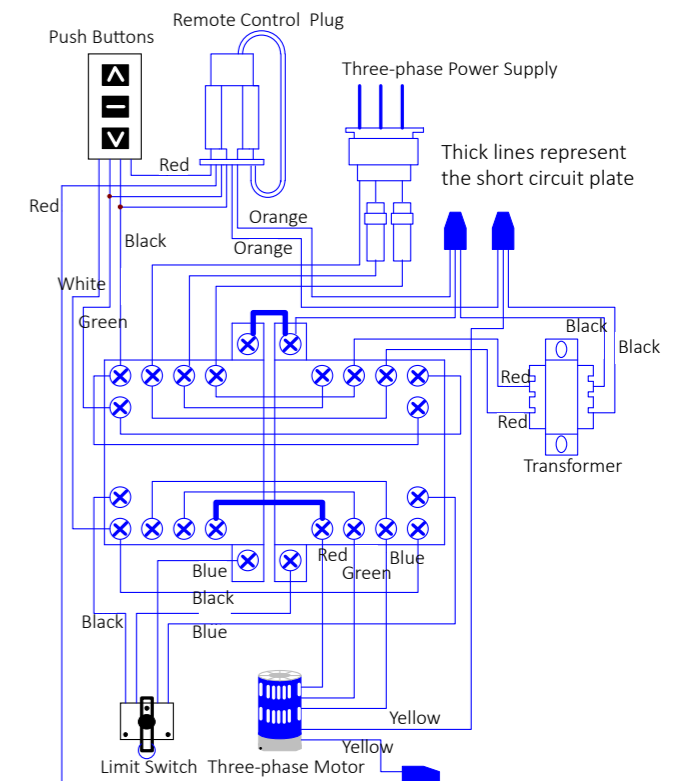
Circuit Board Diagram for 110/220V Single-phase Roller Shutter Motor



Magnetic Contactor Circuitry Diagram for 220V Three-phase Roller Shutter Motor



Magnetic Contactor Circuitry Diagram for 380V Three-phase Roller Shutter Motor

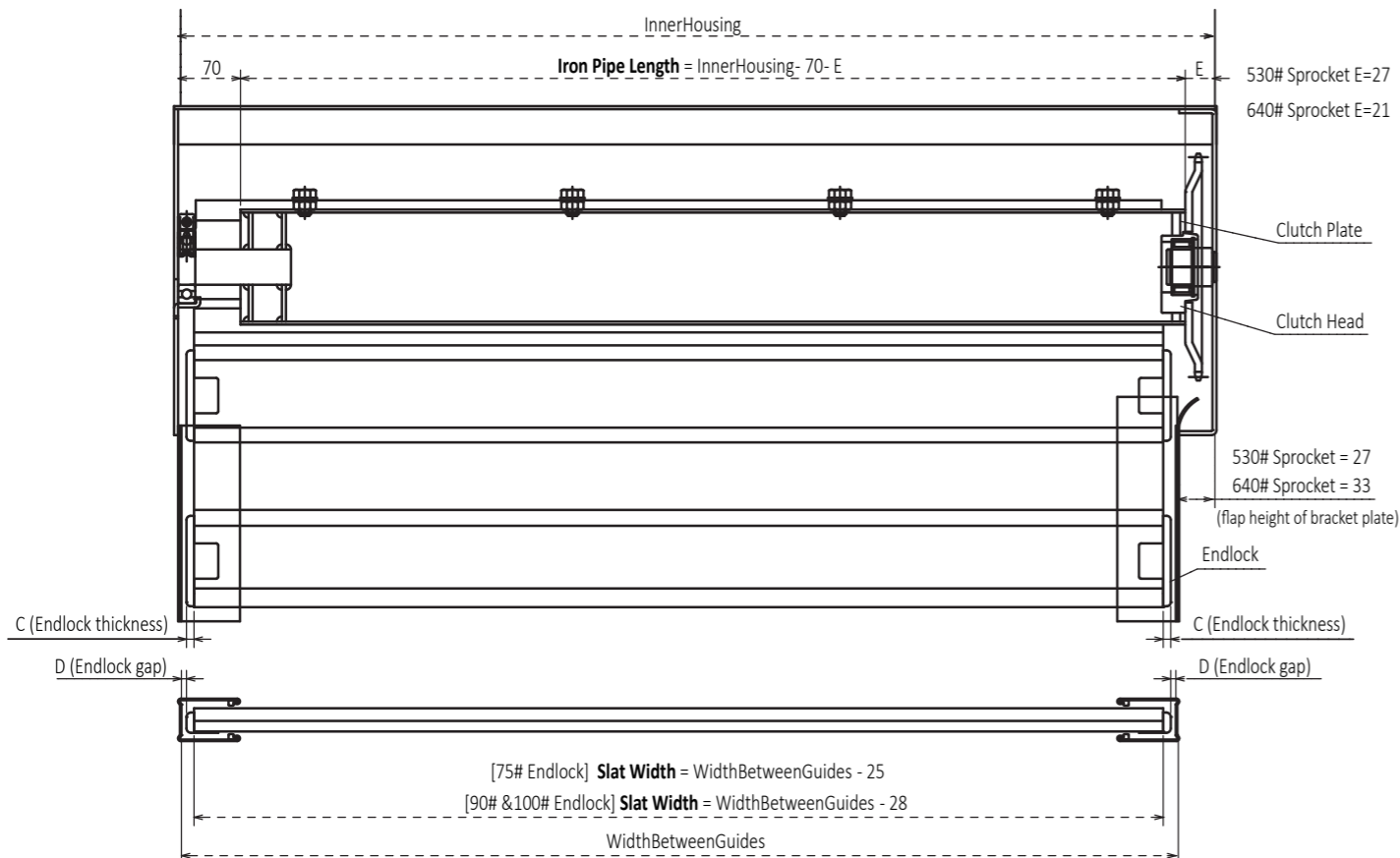


Note: During installing, you should use a third ground wire. Also make sure no persons stand or walk under doorway while operating Rolling door.

Appendix IV - Shutter Housing, Slat and Iron Pipe Dimension Diagram

This section describes the calculations for determining the length of the iron pipe and the slat width. Note that the calculations for these items take into consideration housing and support components on both ends.

Roller shutter slat / Housing / Iron Pipe / Guide Rail Inner Width / Endlock / Endlock Tolerance



Endlock spacing table used for calculating slat width

Slat Model	Endlock thickness for each side (mm) <small>col 2</small>	Endlock gap for each side (mm) <small>col 3</small>	Endlock Spacing $(2 \times \text{col 2}) + (2 \times \text{col 3})$
75#	7.5	5	25
100#	9.0	5	28

Slat Width = WidthBetweenGuides - EndlockSpacing

Other reliable, long-lasting SUNBEAM Products



Touch stop safety slat

Intelligent, Durable Wind-Resist Roller Shutters

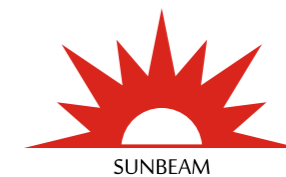
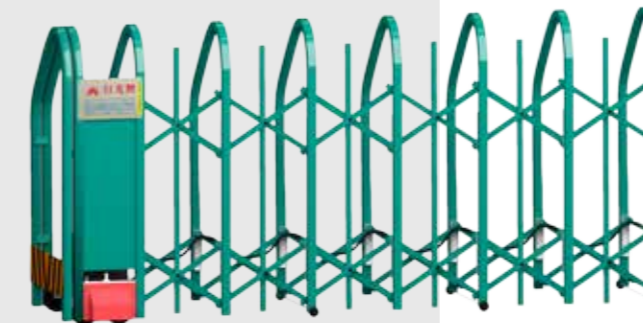
- Touch-stop bottom safety slat
- Strong-wind resistant wheel hooks
- Fire sensor (auto door open or close)
- Anti-jamming guide rails within guides
- Anti-friction plastic wheels between slats and guide rails
- Circuit board smart applications
- Low noise

Safe

Wind-Resist Speedy Roller Shutters

Fast

- Durable, break-resistant slats
- Hook wheels keep shutters on tracks in strong winds
- Remote control can switch gate to manual operations (from inside or outside)
- AC brake motor makes forced entry impossible
- Motor is located at the inside corner of axle housing for easy access



Collapsible Gates

- Touch-stop safety device
- Stop-lock enforced security
- Stainless-steel construction
- Slip-less rail wheels
- Stainless steel needle roller bearings (in wheels)
- Partial openings
- Telephone remote control
- Auto-close (optional)
- LED fault indicators
- Strong-wind hook wheels

Rugged

Smart Sliding Gate Operators



- Resistance safety design
- Cell phone remote control
- Partial-open setting
- Auto-close
- Auto-stop timer if malfunction causes gate to move past endpoints
- Circuit board intelligence
- Gear release (for manual operations during power outages)

Smart

Golden Mountain Machinery Co., Ltd. reserves the right to continue to improve our products, and make modifications and deletions from current specifications without prior notification.

Golden Mountain Roller Shutter Motors

Long lasting solutions to power your entryways



SUNBEAM

